



## **#10121 HAND OPERATED WINDSHIELD WIPER**

PARTS LIST – ASSEMBLY INSTRUCTIONS

**IMPORTANT**  
**READ THIS MANUAL CAREFULLY AND KEEP FOR FUTURE REFERENCE**

## CARTON CONTENTS#10121 HAND OPERATED WIPER

PART#	KEY#	DESCRIPTION
9226		Handle Assembly
	1	Stem
	2	Nut
	3	Washer, Steel
	4	Washer, Rubber
	5	Threaded Body
	6	Handle
12098	7	Adjustable Wiper Arm
12099	8	14" Wiper Blade

### Step 1; See Figure 1:

Install the Handle Assembly

- A. Install the Handle and Stem in the order shown.
- B. Tighten the nut enough to secure the stem. Tighten the set screw in the handle.

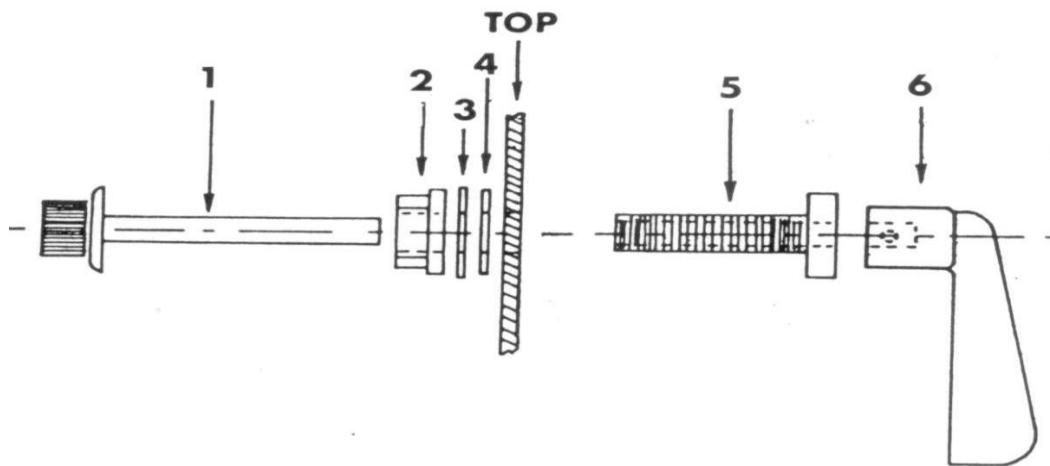


Figure 1

### Step 2; See Figure 2A & 2B:

Install the Arm and Blade.

- A. Hook the arm into the blade. Remove the plastic cover on the splined cap and turn the Allen screws enough to get the arm on the splined shaft.
- B. With the handle hanging straight down attach the wiper arm straight down. Tighten the screws.
- C. Adjust the length of the arm by lifting the lever under the arm and extending it out as needed.

**NOTE:** If the top on your cab is not drilled for the wiper use the template on the next page to drill a 7/16" hole.



Figure 2

**NOTICE: Lift the lever on the underside of the arm to adjust the arm length as needed.**

**Visit us on the web to see our other products.**

**Cabs for Lawn Tractors, Garden Tractors, Compact Tractors, Snow Blowers, Utility Vehicles, & Fork Lifts, Sun Shades for tractors, mowers & Utility Vehicles, Storage Covers for Lawn and Garden equipment.**

**Original Tractor Cab Co., Inc. P.O. Box 97 6849 W. Front St. Arlington, IN 46104  
Phone 765-663-2214 Fax 765-663-2101 Email [Sales@originalcab.com](mailto:Sales@originalcab.com)**

### LIMITED WARRANTY

#### COVERED BY WARRANTY

ORIGINAL TRACTOR CAB CO., INC., (the "Company") warrants to the owner that each new product listed below is merchantable and free of defects in workmanship and material.

During the warranty period, the dealer from whom the product was bought, or the Company, will provide, free of charge, parts and the shipping costs of parts necessary to correct any defect in workmanship and material.

#### WARRANTY PERIOD

The company products listed below are warranted for the stated period from the date of the original purchase:

- |  |        |
|--|--------|
| 1. Cabs for tractors and snow removal equipment    | 1 Year |
| 2. Company manufactured accessories for above cabs | 1 Year |
| 3. Sunshades for lawn and garden tractors          | 1 Year |
| 4. Repair parts                                    | 1 Year |

#### OWNER'S RESPONSIBILITIES

The owner of a new Company manufactured product must do the following to qualify for warranty service:

1. Retain the original invoice or other proof of purchase to avoid unnecessary difficulties in determining eligibility for warranty work.
2. Notify the dealer from whom the product was bought, or the company, as soon as possible after discovery of a possible defect, and provide proof of original purchase.

To notify the company write to: Original Tractor Cab Co., Inc., P.O. Box 97, Arlington, IN 46104.

3. the owner may, upon notification by the Company, be required to return the defective part, or parts, to the Company for inspection and warranty service.

#### NOT COVERED BY WARRANTY

The following are not covered by this warranty:

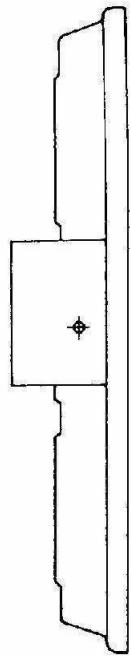
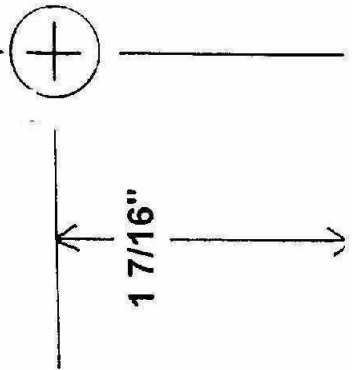
1. Transportation charges to and from servicing dealer or the Company;
2. New products that have been subject to misuse, negligence or accident, or have been altered or repaired in a manner not authorized by the company;
3. Windshield wipers, lights, or accessories that are warranted separately by their respective manufacturers, except Company agrees to make available to the owner whatever warranty benefits may be made available to the Company by the manufacturers.

**All implied warranties, except to the extent prohibited by any applicable law, shall have no greater duration than the warranty period for the applicable product, some states do not allow limitation on how long an implied warranty lasts, so the above limitation may not apply to you.**

**The Company's liability arising out of warranties representation, instructions, or defects from any abuse, shall be limited exclusively to repair or replacing parts under the condition in the warranty, and in no event will Company be liable for incidental or consequential damages. Some states do not allow the exclusion or limitation of incidental or consequential damages, so the above limitation or exclusion may not apply to you.**

**This warranty gives you specific legal rights, and you may also have rights that vary from state to state.**

CENTER CROSSWISE ON FRONT OF TOP



PLACE THIS EDGE ON FRONT LIP OF TOP