



SNOW THROWER CAB

Model #20170

FOR

Ariens 2011 / 2016 2 Stage Snow Blowers

! IMPORTANT !

READ THIS ASSEMBLY MANUAL CAREFULLY AND KEEP FOR FUTURE REFERENCE.

REMOVE THE VINYL COVER FOR TRANSPORT IN AN OPEN TRUCK OR TRAILER.



WARNING



1. This cab is designed to provide foul weather protection only. It does not provide protection from noise, exhaust fumes, chemicals or injury from collision, rollover or other accidents.
2. Do not operate machine in confined areas without proper ventilation.
3. Thoroughly check area of operation before using machine.
4. The cab adds height to the machine. Low tree limbs and other overhead structures that did not interfere with the operation of the machine before, may now be obstacles.

MAINTENANCE INSTRUCTIONS

- A. Periodically check all bolts to see that they are tight. If bolts become loose, failure of cab parts may occur.

**DO NOT CLEAN THE CLEAR PLASTIC WINDOWS WHEN THE PLASTIC IS DRY.
THE CLEAR PLASTIC WILL SCRATCH.**

- B. Avoid contact with plastic windows. Keep plastic windows clean by washing them with clear running water and rubbing with your bare hands, only. The use of a rag, sponge or brush will scratch the plastic. Liquid soap may also be used for window cleaning. During freezing weather, an automotive windshield washer solvent may be used.
- C. Use liquid soap and water to clean colored vinyl portions. Scrubbing with a brush or rag is also permitted on the colored vinyl portions.

STORAGE INSTRUCTIONS

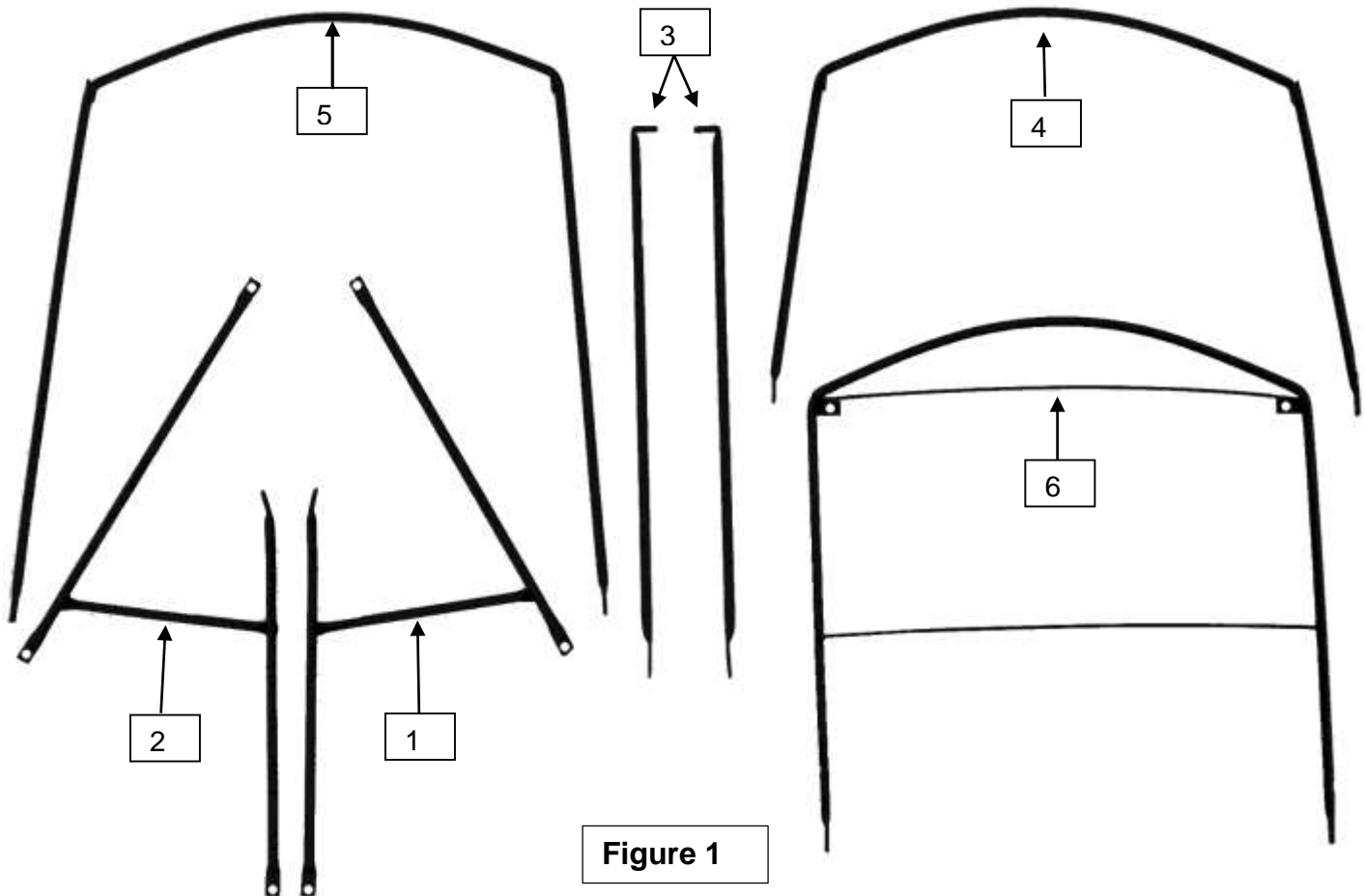
Prior to storage clean the windows and colored vinyl parts with a mild automotive detergent, rinse with clean water and allow to thoroughly dry, Store cab in a clean dry place out of direct sunlight. Avoid folding plastic windows.

! IMPORTANT !

ALWAYS REMOVE VINYL COVER BEFORE TRANSPORTING MACHINE IN AN OPEN TRUCK OR TRAILER.

CARTON CONTENTS CAB MODEL #20170

PART #	KEY #	QTY	DESCRIPTION
20171	1	1	BRACKET, RH
20172	2	1	BRACKET, LH
4977	3	2	FRONT POST
20174	4	1	HORIZONTAL CURVED BOW
20175	5	1	REAR VERTICAL BOW
20176	6	1	TOP FRAME
20173	7	1	VINYL COVER
20163		1	HARDWARE PACKAGE (Contents Listed Below)
786		6	1/4" x 5/8" Bolt
788		2	1/4" x 3/4" Bolt
926		2	1/4" x 1" Bolt
2		2	1/4" Lock Washers
1514		2	1/4" Flat Washer
4556		4	1/4" x 1 1/4" Fender Washer
0730		8	1/4" Lock Nut
60461		2	1/4"-20 x 1 3/4" Coupling Nut
4723		2	5/16" x 1 3/4" Carriage Bolt (for Wide Handlebars Only)
9095		2	5/16" x 4" Bolt (for Narrow Handlebars Only)
60138		2	5/8" O.D. x 2" Spacer (for Narrow Handlebars Only)
7929		4	Plastic Caps



Step 1; See Figure 1: Identify all of the steel parts using figure 1 as an example.

INSTALLATION INSTRUCTIONS
COMPLETELY READ INSTRUCTIONS BEFORE INSTALLING THE CAB.

The right side of the cab is determined from the operator's position.

Step 2; See Figure 2:
For wide handlebar models.
Install Brackets (1 & 2).

A. Remove the bolts at Reference A. Insert 5/16" x 1 3/4" carriage bolts outward through the holes in the handlebars and then through the lower hole in the bracket. Replace the 5/16" locknuts. Run the nuts down on the bolts. **Do not tighten the bolts at this time.**

Step 3; See Figure 3A & 3B:
Install coupling nuts.

A. Remove the nuts at Reference B under both sides of the handlebars. Place a 1/4" flat washer over the bolts, add 1/4" coupling nuts and tighten.

B. Swing the brackets upward and insert 1/4" x 5/8" bolts with lock washers through the other holes in the bracket. Thread the bolts into the coupling nut. **Do not tighten the bolts at this time.**

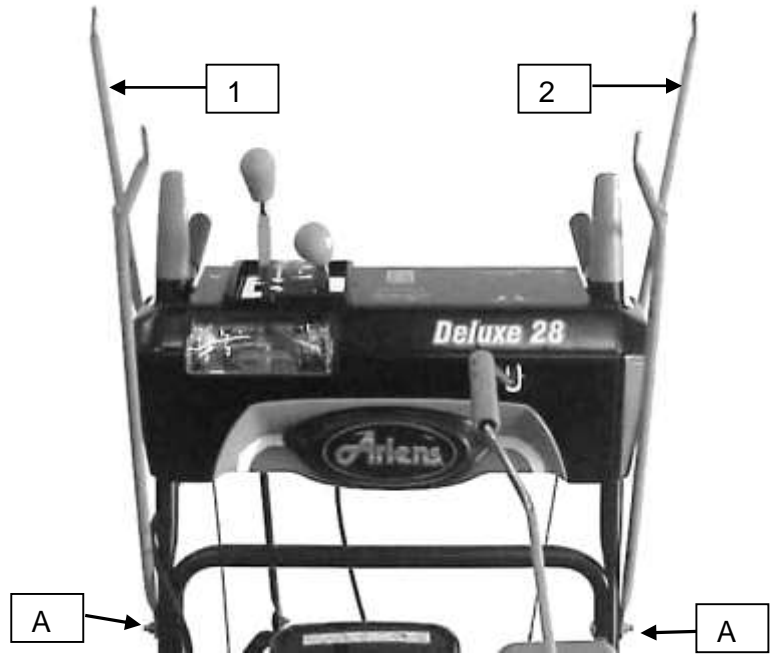


Figure 2

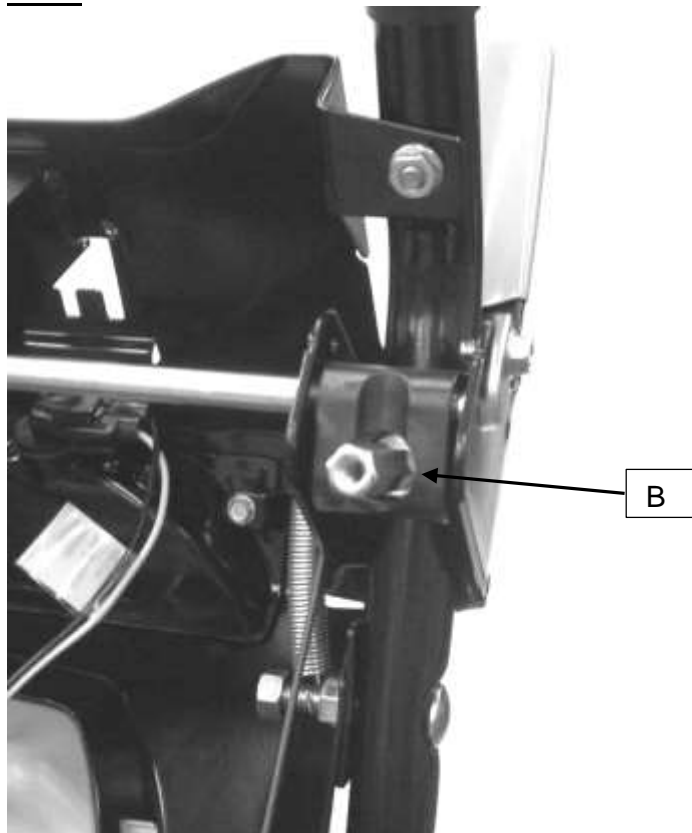


Figure 3A

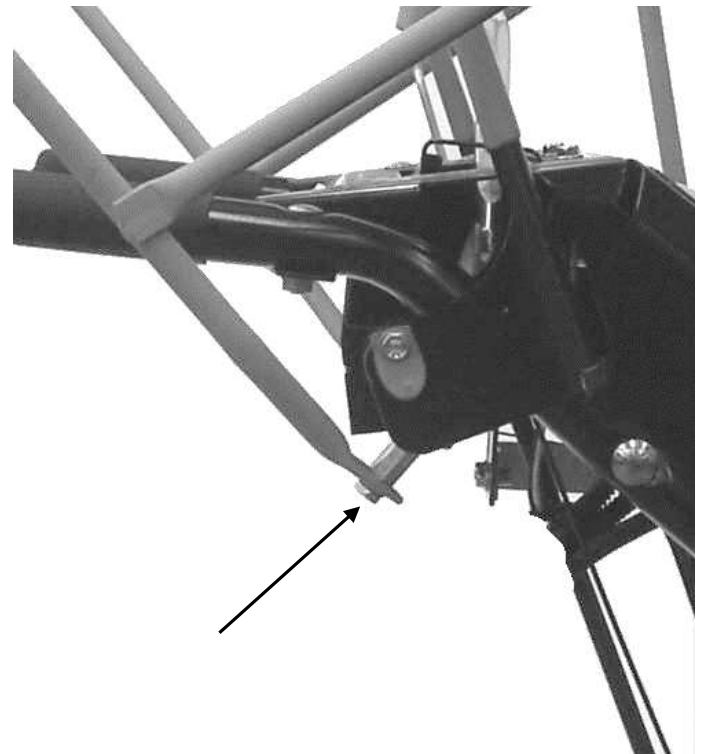


Figure 3B

Step 2; See Figure 2:
For narrow handlebar models.

Install Brackets (1 & 2).

A. Remove the bolts at Reference A. Insert 5/16" x 4" bolts inward through the lower holes in the brackets. Add the 2" long spacers and then insert the bolts through the holes in the handlebars replace 5/16" locknuts. Run the nuts down on the bolts. **Do not tighten the bolts at this time.**

Step 3; See Figure 3A & 3B:

Install coupling nuts.

A. Remove the nuts at reference B under both sides of the handlebars. Place 1/4" flat washers over the bolts, add 1/4" coupling nuts and tighten.

B. Swing the brackets upward and insert 1/4" x 5/8" bolts with lock washers through the other holes in the bracket. Thread the bolts into the coupling nut. **Do not tighten the bolts at this time.**

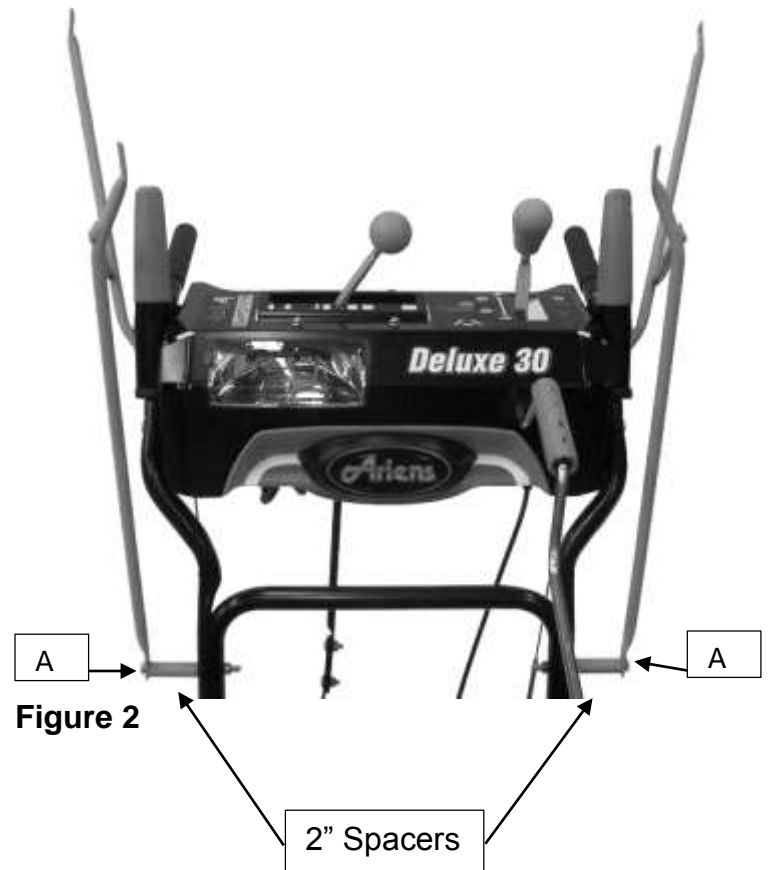


Figure 2

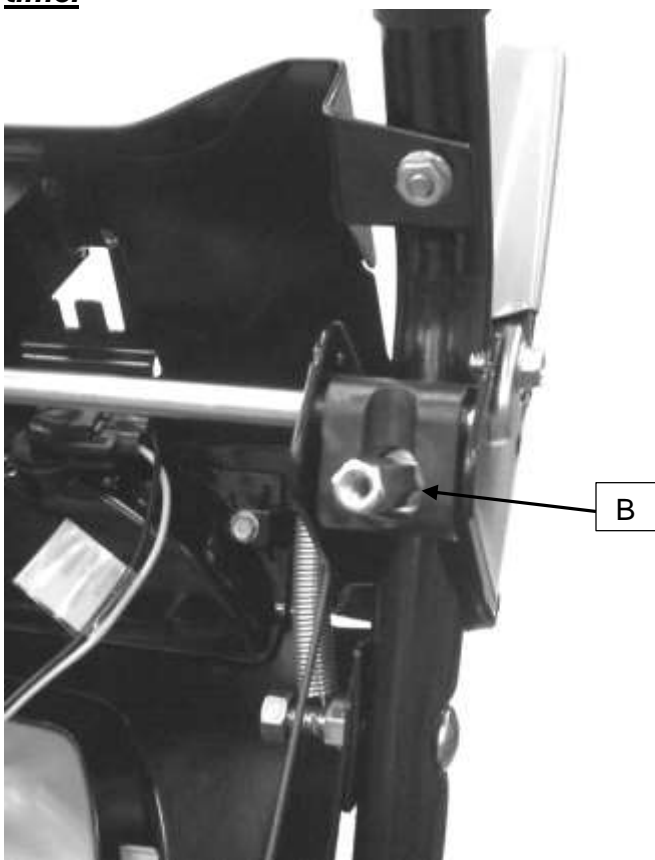


Figure 3A

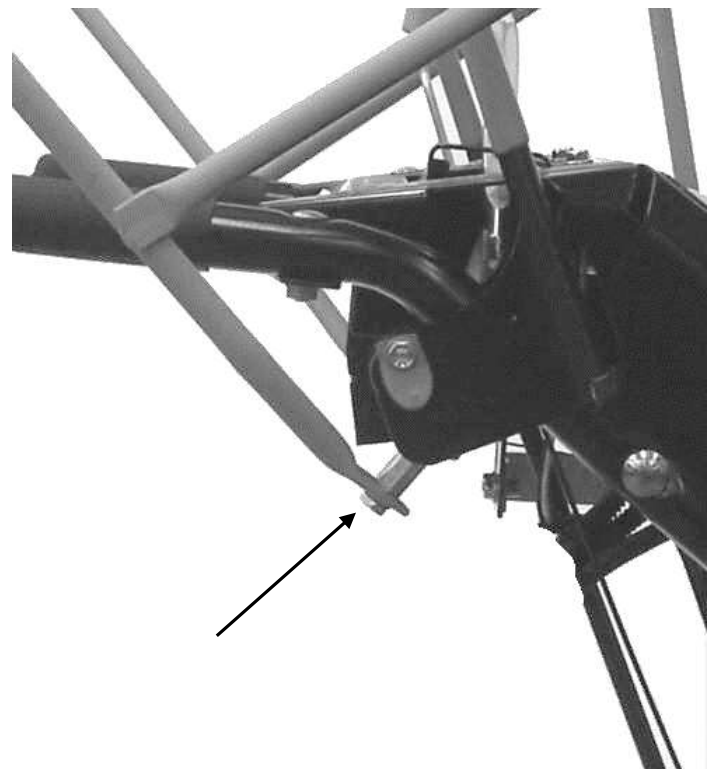


Figure 3B

Step 4; See Figure 4:

- A.** Attach the Horizontal Bow (4) and the Front Posts (3) to the Brackets (1 & 2) using two 1/4" x 3/4" bolts and locknuts (**Refer to Detail A**).
- B.** Position the Front Posts on the inside of the assembly, the mounting tabs on the Horizontal Bow in the middle and the Brackets on the outside.
- C.** Be sure the tops on the Front Posts point toward each other.
- D.** Insert the bolts from the inside pointing out and add nuts. Run the nuts down on the bolts. **Do not tighten the bolts at this time.**

Step 5; See Figure 4:

- A.** Mount each leg of the Rear Vertical Bow (5) to the Brackets and the Horizontal Bow using a 1/4 x 1" bolt, two 1/4" fender washers, and a locknut (**Refer to Detail B**).
- B.** Be sure that the tabs on the Rear Vertical Bow are towards the front of the cab.
- C.** Position the Bracket on the inside of the assembly, with the Rear Vertical Bow in the middle, and the Horizontal Bow on the outside. Place a fender washer on each side of the framework.
- D.** Insert the bolts from the inside pointing out and add nuts. Run the nuts down on the bolts. **Do not tighten the bolts at this time.**

Step 6; See Figure 4:

- A.** Attach the Top Frame (6) to the Rear Vertical Bow and the Front Posts using four 1/4" x 5/8" bolts and locknuts.
- B.** Position the Rear Vertical Bow on the inside of the Top Frame.
- C.** Insert the bolts from the inside pointing out and add nuts. Run the nuts down on the bolts. **Do not tighten the bolts at this time.**
- D.** Place a Plastic Cap over the threads of each bolt that attaches the Rear Bow.

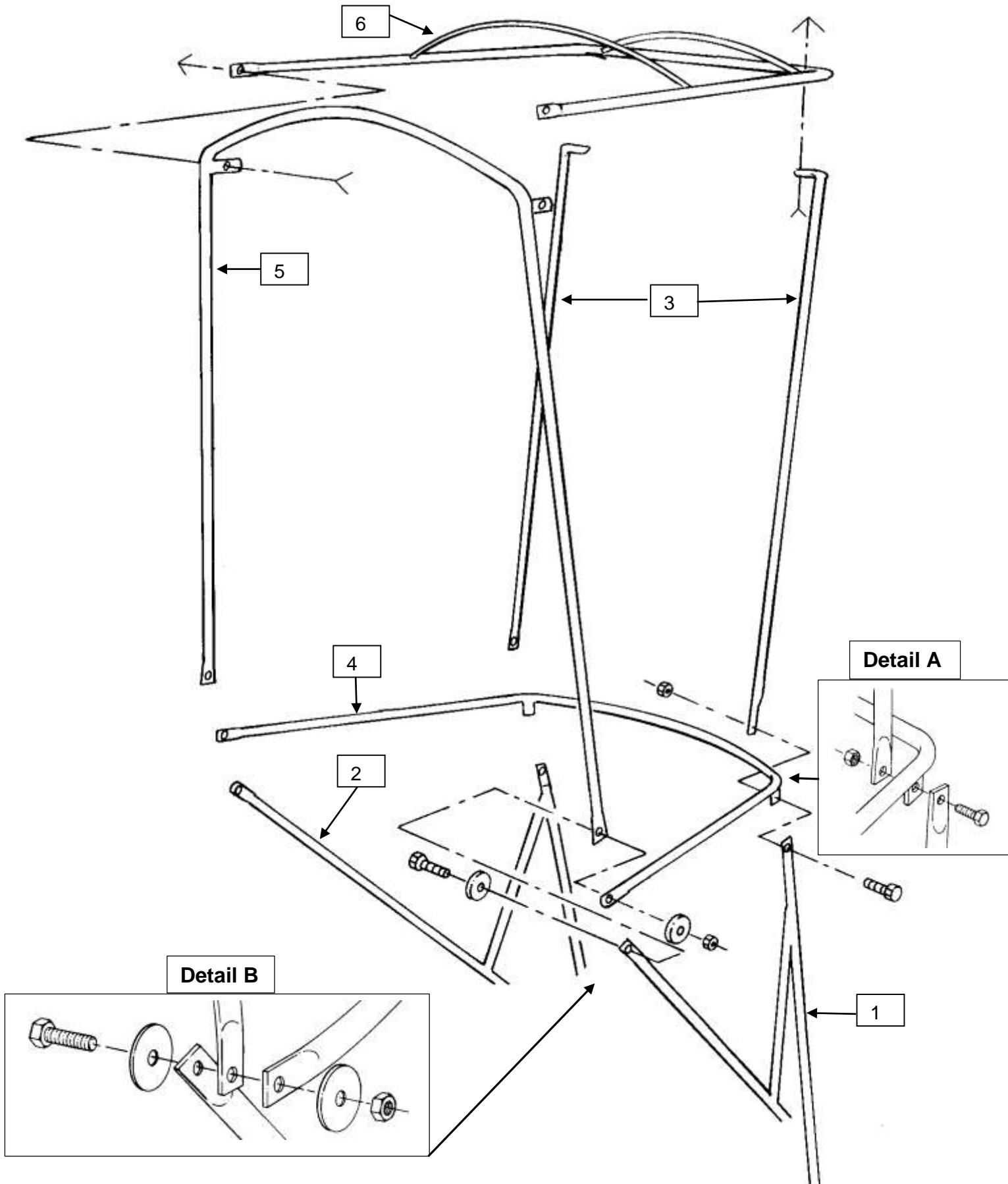


Figure 4

Step 5; See Figure 5A & 5B:

Install Vinyl Cover (7) and tighten bolts.

A. Place the Vinyl Cover over frame and secure the Velcro® flaps around the top and sides of the Vertical Bow (5).

B. The Vinyl Cover will hold the shape of the Frame while the bolts are tightened.

C. Tighten all bolts at this time.

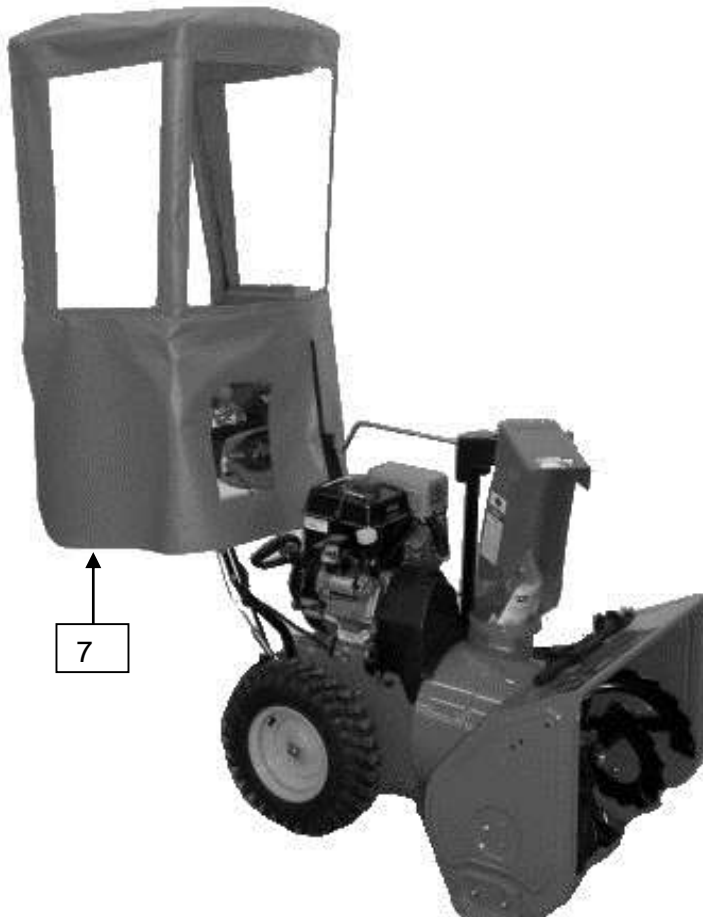


Figure 5B

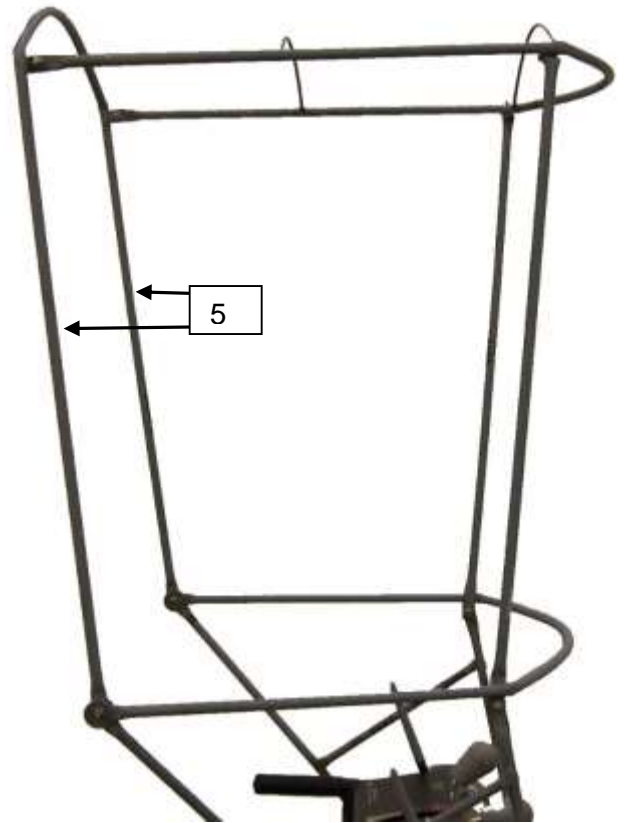


Figure 5A

Optional Accessory:

20127 Sand Box Counter Weight Kit

Counter Weight adds 16.5 lbs. additional down force to snow head for tough icy conditions.



ORIGINAL
TRACTOR CABS
FIRST IN WEATHER PROTECTION



For Replacement Parts and Accessories Contact:

Original Tractor Cab Co., Inc.
P.O. Box 97 6849 W. Front St.
Arlington, IN 46104
Phone 765-663-2214
Fax 765-663-2101
Email Sales@originalcab.com

Visit us on the web to see our other products.

www.originalcab.com

Cabs for Lawn Tractors, Garden Tractors, Compact Tractors, Snow Blowers, Utility Vehicles

Sunshades for Tractors, Mowers, & Utility Vehicles

LIMITED WARRANTY SNOW REMOVAL EQUIPMENT CABS

COVERED BY WARRANTY

ORIGINAL TRACTOR CAB CO., INC., (the "Company") warrants to the owner that each new product listed below is merchantable and free of defects in workmanship and material.

During the warranty period, the dealer from whom the product was bought, or the Company, will provide, free of charge, parts and the shipping costs of parts necessary to correct any defect in workmanship and material.

WARRANTY PERIOD

The company products listed below are warranted for the stated period from the date of the original purchase:

- | | |
|--|--------|
| 1. Cabs for tractors and snow removal equipment | 1 Year |
| 2. Company manufactured accessories for above cabs | 1 Year |
| 3. Sunshades for lawn and garden tractors | 1 Year |
| 4. Repair parts | 1 Year |

OWNER'S RESPONSIBILITIES

The owner of a new Company manufactured product must do the following to qualify for warranty service :

1. Retain the original invoice or other proof of purchase to avoid unnecessary difficulties in determining eligibility for warranty work.
2. Notify the dealer from whom the product was bought, or the company, as soon as possible after discovery of a possible defect, and provide proof of original purchase.
To notify the company write to: Original Tractor Cab Co., Inc., P.O. Box 97, Arlington, IN 46104.
3. The owner may, upon notification by the Company, be required to return the defective part, or parts, to the Company for inspection and warranty service.

NOT COVERED BY WARRANTY

The following are not covered by this warranty:

1. Transportation charges to and from servicing dealer or the Company;
2. New products which have been subject to misuse, negligence or accident, or have been altered or repaired in a manner not authorized by the company;
3. Windshield wipers, lights, or accessories that are warranted separately by their respective manufacturers, except Company agrees to make available to the owner whatever warranty benefits may be made available to the Company by the manufacturers.

All implied warranties, except to the extent prohibited by any applicable law, shall have no greater duration than the warranty period for the applicable product, some states do not allow limitation on how long an implied warranty lasts, so the above limitation may not apply to you.

The Companies' liability arising out of warranties representation, instructions, or defects from any abuse, shall be limited exclusively to repair or replacing parts under the condition in the warranty, and in no event will Company be liable for incidental or consequential damages. Some states do not allow the exclusion or limitation of incidental or consequential damages, so the above limitation or exclusion may not apply to you.

This warranty gives you specific legal rights, and you may also have rights, which vary from state to state.