



Hard Top Canopy # 30382

FOR:

Tractors and Mowers

with two post ROPS That are 2" x 2" or 2" x 3" square tube and no more than 34" wide.
(To attach to ROPS that are 3" x 1 1/2" order shim kit #30410)

ASSEMBLY INSTRUCTIONS - PARTS LIST

! IMPORTANT !

READ THIS MANUAL CAREFULLY AND KEEP FOR FUTURE REFERENCE

! WARNING !

THIS CANOPY WILL NOT PROTECT THE OPERATOR FROM INJURIES CAUSED BY ROLLOVER,
COLLISION, OR OTHER ACCIDENTS

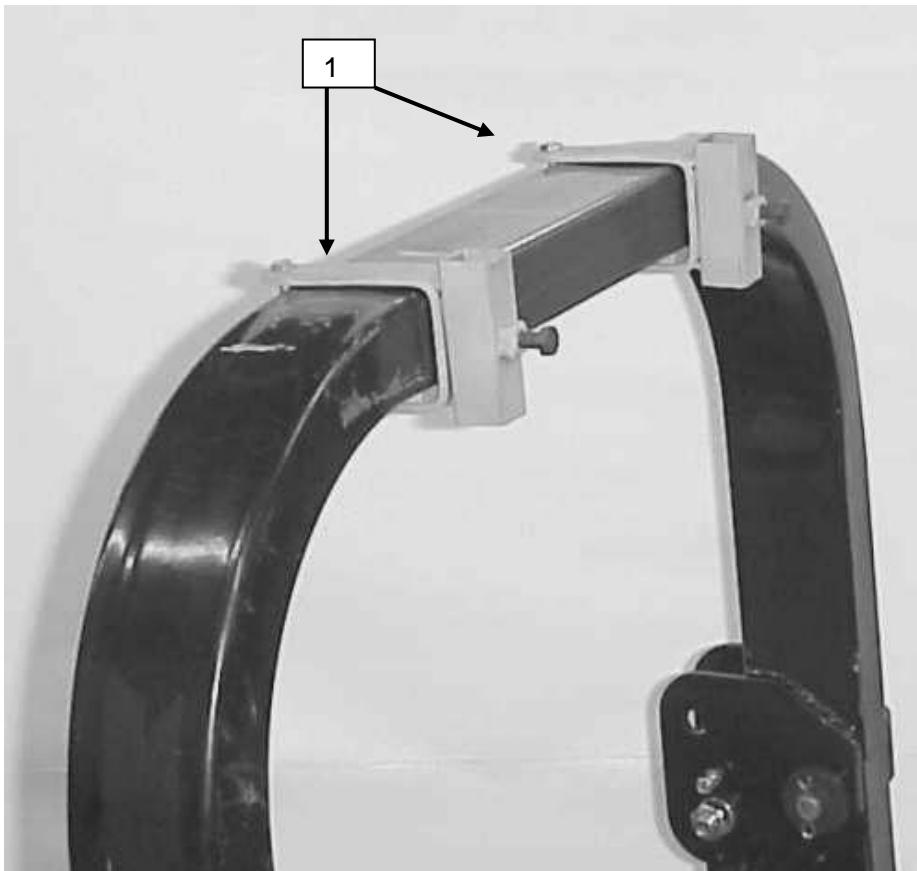
Carton Contents for Hard Top Canopy #30382

PART #	KEY #	QTY.	DESCRIPTION
30401	1	2	Receiver
30384	2	1	Bracket
30383	3	1	Frame
#	4	1	Plastic Top #11729 White, or #10000 Black, or #11197 Green
30445	5	2	Brace tube 3/4"
30446	6	2	Brace tube 1/2"
30452	7	2	Clamp
30385		1	Hardware Package (Contents Listed Below)
5144		2	1/4"-20 x 2 3/4" Cap Screw
929		2	1/4"-20 x 3" Cap Screw
926		2	1/4"-20 x 1" Cap Screw
786		8	1/4"-20 x 5/8" Cap Screw
1514		12	1/4" Flat Washer
730		16	1/4"-20 Two Way Lock Nut
784		2	5/16"-18 x 3/4" Cap Screw

Use these photos and instructions to assemble and adjust the canopy.

Step 1; See Figure 1:

Place the clamp on Receivers onto the ROPS as shown. Insert 1/4" x 2 3/4" bolts upwards and add nuts. Center them about 10" apart. Do not tighten at this time. Thread the 5/16" x 3/4" bolts into the weld nuts.



NOTE: On some applications with ROPS that lean forward the clamp on Receivers can be put on the other side of the ROPS for a better shade position.

Figure 1

Step 2; See Figure 2:

Assemble the Bracket to the Rear Frame with 1/4" x 5/8" bolts with 1/4" flat washers over each slot. Add 1/4" lock nuts. Run the nuts most of the way down but do not tighten at this time to allow for later adjustment.

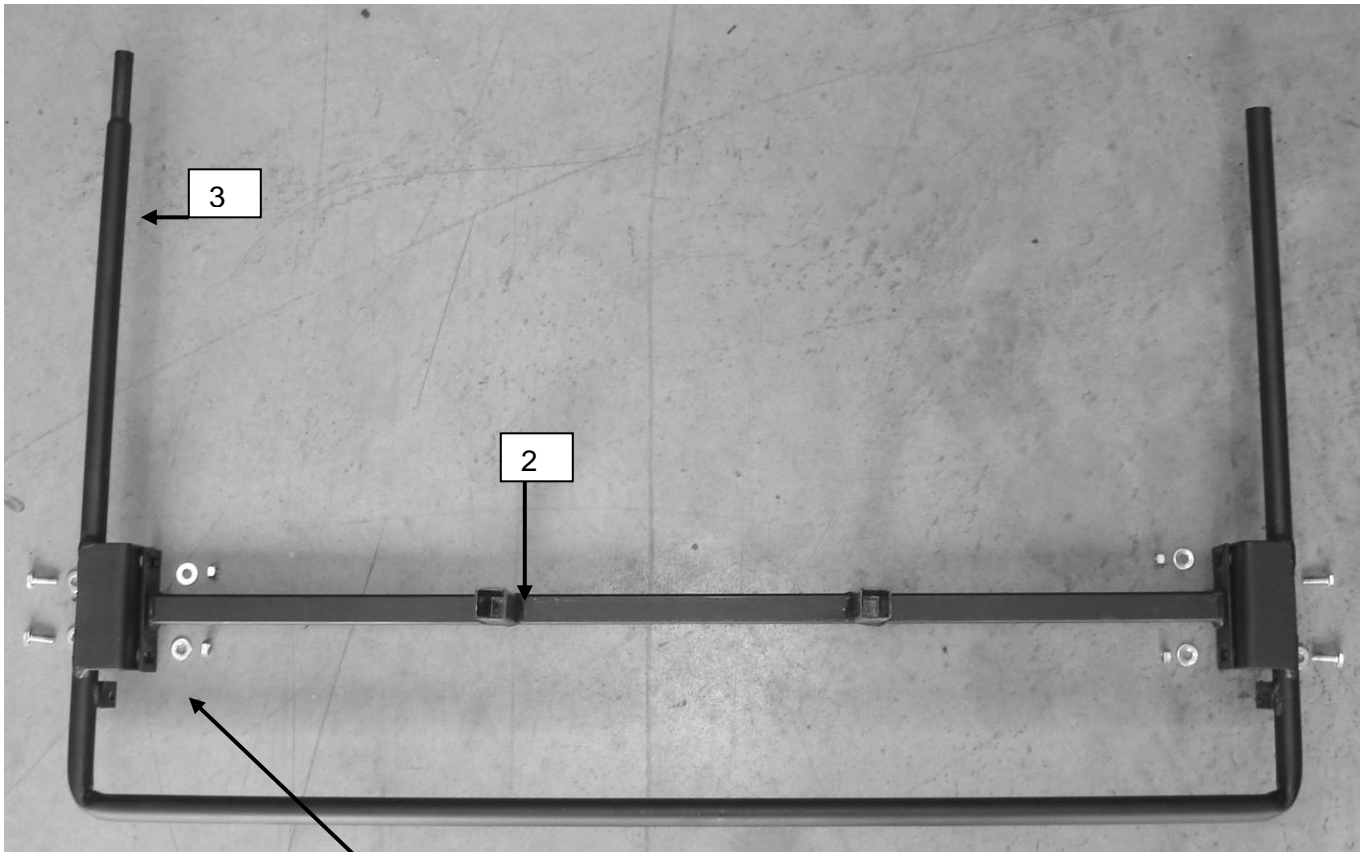
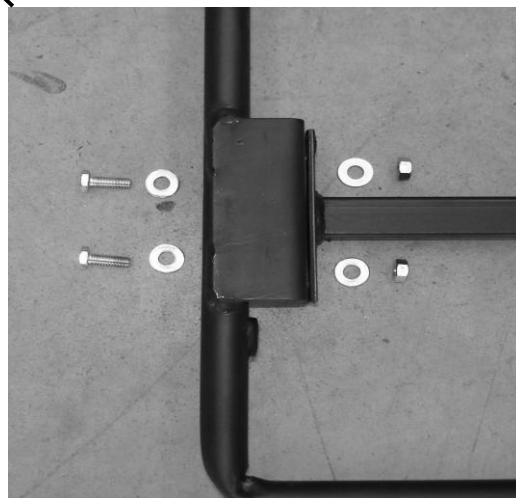


Figure 2

Parts are show upside down.



Step 3; See Figure 3:

Fully insert the Bracket into the Receivers as shown. Tighten the 1/4" x 2 3/4" clamp bolts. Tighten the 5/16" x 3/4" bolts in the weld nuts.



Figure 3

Step 4; See Figure 4:

Insert the front frame into the rear frame.

Level the frame and tighten the 1/4" x 5/8" bolts in the slots.

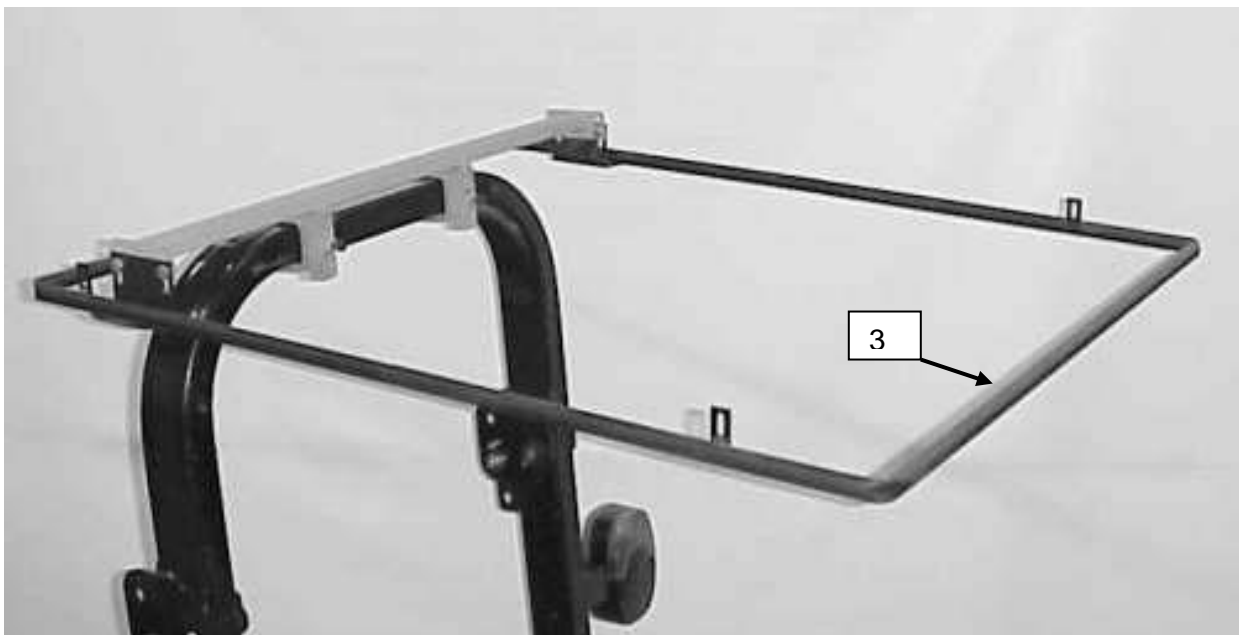


Figure 4

Step 5; See Figure 5:

Lay the Plastic Top on the Frame. Place 1/4" washers over two 1/4" x 5/8" bolts. Insert them inward through the rear holes in the top and the tabs welded to the frame. Add locknuts.

Place 1/4" washers over two 1/4" x 1" bolts. Insert them inward through the front holes in the top and the tabs welded to the frame. Add locknuts. Tighten the bolts.

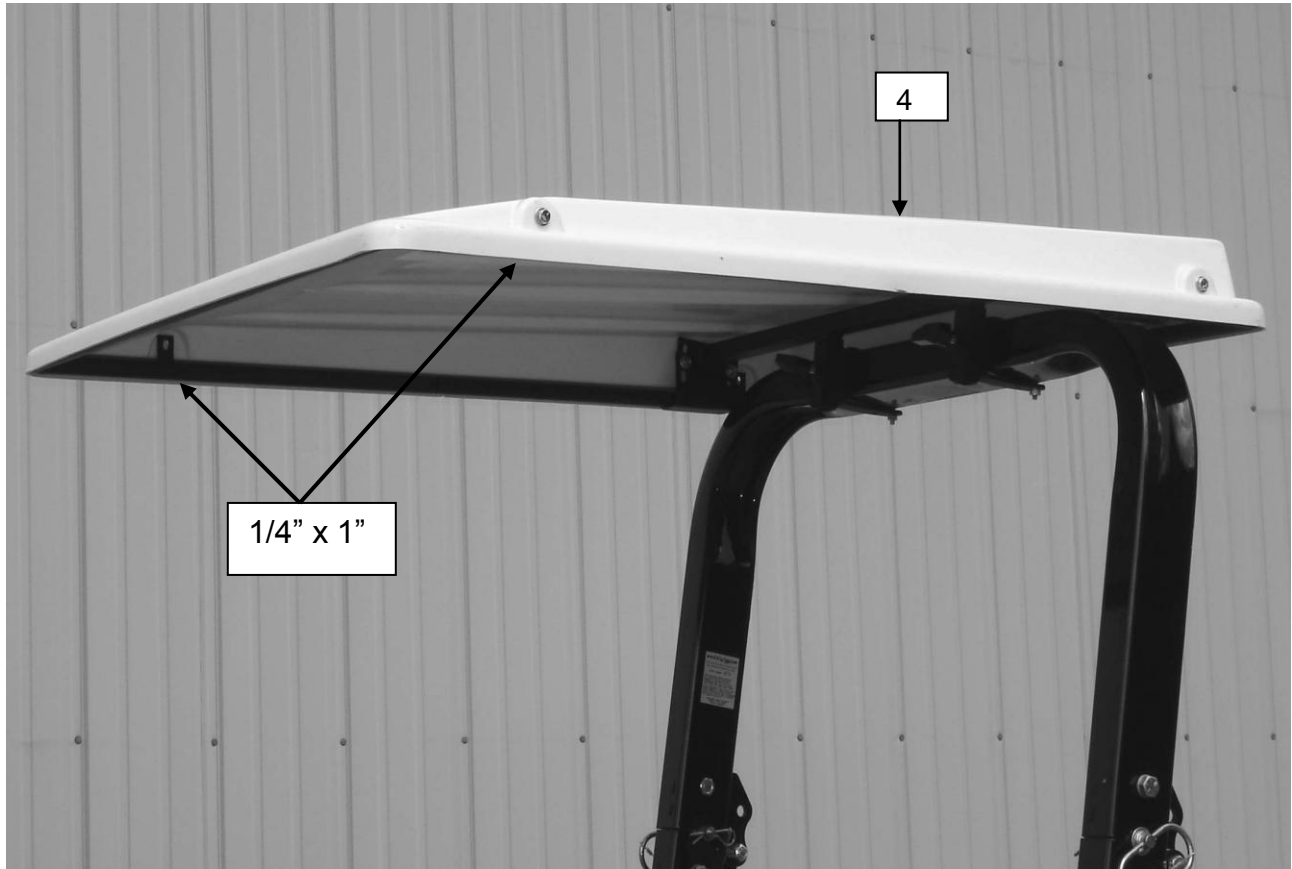


Figure 5

Step 6; See Figure 6:

Insert the small support tubes into the large support tubes. Insert the 5/16" x 1/2" bolts into the weld nuts on the large tube. Tighten just enough to hold the tubes together. Place the boltholes in the small tubes over the 1/4" x 1" bolt and add nuts. Do not tighten at this time.

Place Clamps over the ROPS and attach the large support tubes to the clamp with the 1/4" x 3" bolts for 2" x 3" ROPS or 1/4" x 5/8" bolts for 2" x 2" ROPS.

Place the clamps as far up as possible to prevent interference when getting on and off of the machine.

Tighten all of the bolts and nuts.

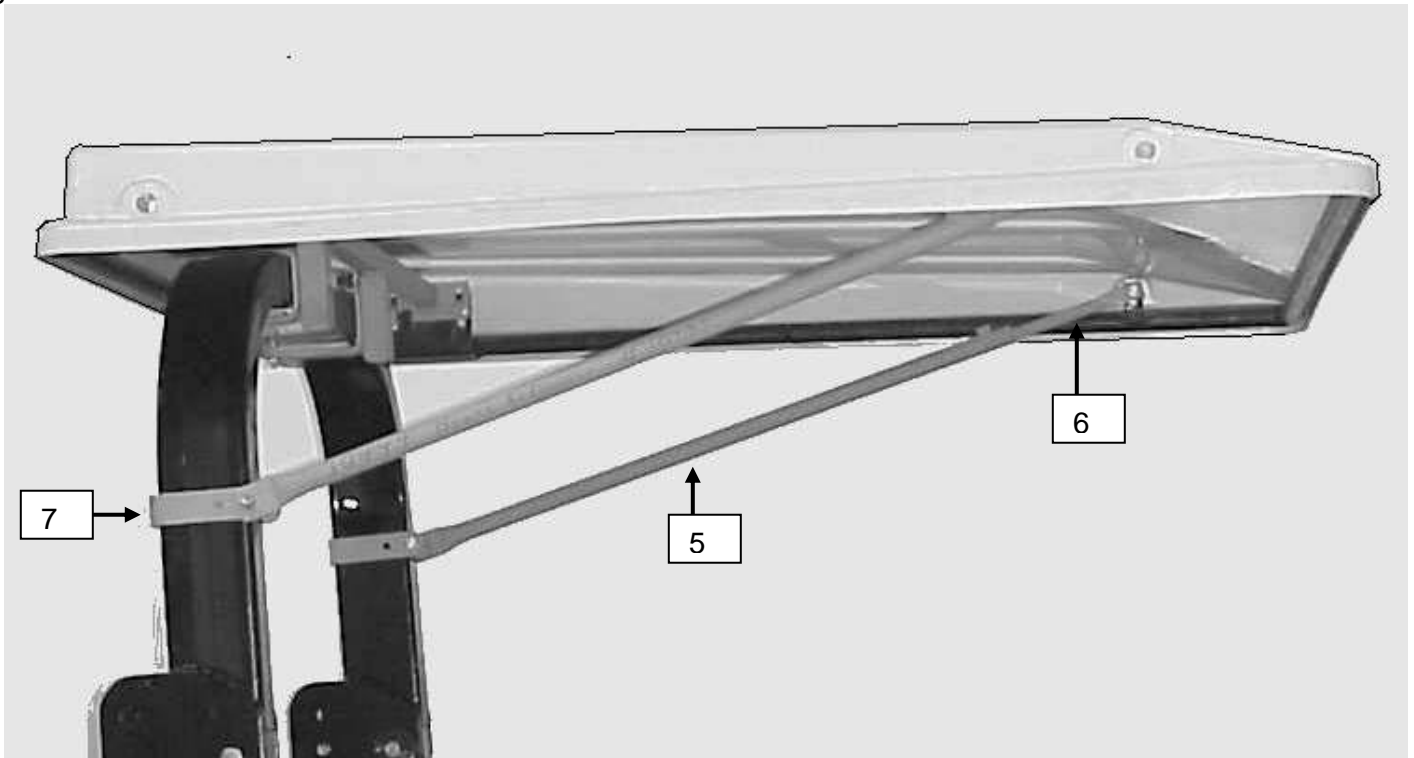
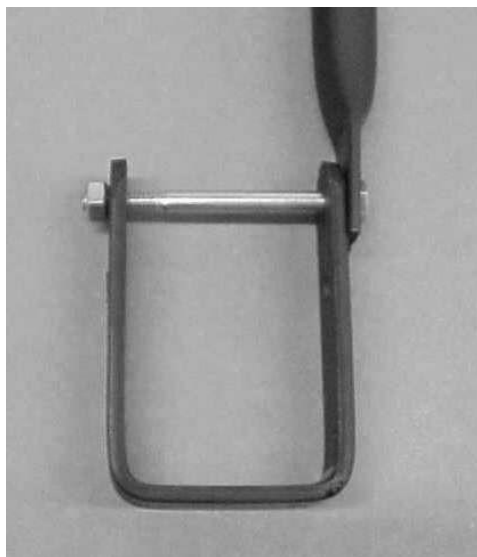
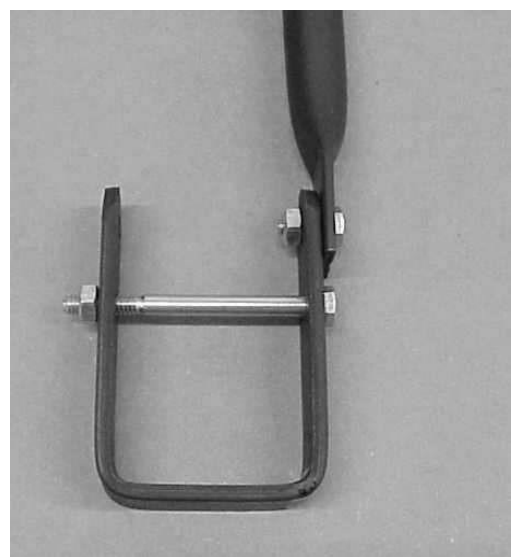


Figure 6



For 2" X 3" ROPS



For 2" X 2" ROPS

! WARNING !

The canopy should be checked for loose bolts or damage before each use to avoid failure while in use.

Original Tractor Cab Co., Inc. P.O. Box 97 6849 W. Front St. Arlington, IN 46104
Phone 765-663-2214 Fax 765-663-2101 Email Sales@originalcab.com

LIMITED WARRANTY

COVERED BY WARRANTY

ORIGINAL TRACTOR CAB CO., INC., (the "Company") warrants to the owner that each new product listed below is merchantable and free of defects in workmanship and material.

During the warranty period, the dealer from whom the product was bought, or the Company, will provide, free of charge, parts and the shipping costs of parts necessary to correct any defect in workmanship and material.

WARRANTY PERIOD

The company products listed below are warranted for the stated period from the date of the original purchase:

- | | |
|--|--------|
| 1. Cabs for tractors and snow removal equipment | 1 Year |
| 2. Company manufactured accessories for above cabs | 1 Year |
| 3. Sunshades for lawn and garden tractors | 1 Year |
| 4. Repair parts | 1 Year |

OWNER'S RESPONSIBILITIES

The owner of a new Company manufactured product must do the following to qualify for warranty service:

1. Retain the original invoice or other proof of purchase to avoid unnecessary difficulties in determining eligibility for warranty work.
2. Notify the dealer from whom the product was bought, or the company, as soon as possible after discovery of a possible defect, and provide proof of original purchase.

To notify the company write to: Original Tractor Cab Co., Inc., P.O. Box 97, Arlington, IN 46104.

3. the owner may, upon notification by the Company, be required to return the defective part, or parts, to the Company for inspection and warranty service.

NOT COVERED BY WARRANTY

The following are not covered by this warranty:

1. Transportation charges to and from servicing dealer or the Company;
2. New products that have been subject to misuse, negligence or accident, or have been altered or repaired in a manner not authorized by the company;
3. Windshield wipers, lights, or accessories that are warranted separately by their respective manufacturers, except Company agrees to make available to the owner whatever warranty benefits may be made available to the Company by the manufacturers.

All implied warranties, except to the extent prohibited by any applicable law, shall have no greater duration than the warranty period for the applicable product, some states do not allow limitation on how long an implied warranty lasts, so the above limitation may not apply to you.

The Company's liability arising out of warranties representation, instructions, or defects from any abuse, shall be limited exclusively to repair or replacing parts under the condition in the warranty, and in no event will Company be liable for incidental or consequential damages. Some states do not allow the exclusion or limitation of incidental or consequential damages, so the above limitation or exclusion may not apply to you.

This warranty gives you specific legal rights, and you may also have rights that vary from state to state.