



YESTERDAY



TODAY

Cab # 12244 for Kubota BX23S

PARTS LIST – ASSEMBLY INSTRUCTIONS

IMPORTANT!

READ THIS MANUAL CAREFULLY AND KEEP FOR FUTURE REFERENCE

CAUTION!

REMOVE THE VINYL PANELS FOR TRANSPORT IN AN OPEN TRUCK OR TRAILER

⚠WARNING⚠

THIS CAB WILL NOT PROTECT OPERATOR FROM INJURIES CAUSED BY ROLLOVER, COLLISION, OR OTHER ACCIDENTS



Go to our YouTube Channel and watch the Installation Video.

LIMITED WARRANTY SNOW REMOVAL EQUIPMENT CABS

COVERED BY WARRANTY

ORIGINAL TRACTOR CAB CO., INC., (the "Company") warrants to the owner that each new product listed below is merchantable and free of defects in workmanship and material.

During the warranty period, the dealer from whom the product was bought, or the Company, will provide, free of charge, parts and the shipping costs of parts necessary to correct any defect in workmanship and material.

WARRANTY PERIOD

The company products listed below are warranted for the stated period from the date of the original purchase:

- | | |
|--|--------|
| 1. Cabs for tractors and snow removal equipment | 1 Year |
| 2. Company manufactured accessories for above cabs | 1 Year |
| 3. Sunshades for lawn and garden tractors | 1 Year |
| 4. Repair parts | 1 Year |

OWNER'S RESPONSIBILITIES

The owner of a new Company manufactured product must do the following to qualify for warranty service:

1. Retain the original invoice or other proof of purchase to avoid unnecessary difficulties in determining eligibility for warranty work.
2. Notify the dealer from whom the product was bought, or the company, as soon as possible after discovery of a possible defect, and provide proof of original purchase.
To notify the company write to: Original Tractor Cab Co., Inc., P.O. Box 97, Arlington, IN 46104.
3. The owner may, upon notification by the Company, be required to return the defective part, or parts, to the Company for inspection and warranty service.

NOT COVERED BY WARRANTY

The following are not covered by this warranty:

1. Transportation charges to and from servicing dealer or the company.
2. New products which have been subject to misuse, negligence or accident, or have been altered or repaired in a manner not authorized by the company.
3. Windshield wipers, lights, or accessories that are warranted separately by their respective manufacturers, except company agrees to make available to the owner whatever warranty benefits may be made available to the Company by the manufacturers.

All implied warranties, except to the extent prohibited by any applicable law, shall have no greater duration than the warranty period for the applicable product, some states do not allow limitation on how long an implied warranty lasts, so the above limitation may not apply to you.

The Company's liability arising out of warranties representation, instructions, or defects from any abuse, shall be limited exclusively to repair or replacing parts under the condition in the warranty, and in no event will Company be liable for incidental or consequential damages. Some states do not allow the exclusion or limitation of incidental or consequential damages, so the above limitation or exclusion may not apply to you.

This warranty gives you specific legal rights, and you may also have rights that vary from state to state.



WARNING

This cab is designed to provide foul weather protection only. It does not provide protection from noise, exhaust fumes, chemicals or injury from roll-over, collision, or other accidents.

1. Do not operate machine in confined areas without proper ventilation.
2. Thoroughly check area of operation before using machine.
3. The cab adds height to the machine. Low tree limbs and other overhead structures that did not interfere with the operation of the machine before, may now be obstacles.

MAINTENANCE INSTRUCTIONS

Periodically check all bolts to see that they are tight. If bolts become loose, failure of cab parts may occur.

Door latches and hinges should be lubricated with light machine oil for proper operation.

**DO NOT CLEAN THE CLEAR PLASTIC WINDOWS WHEN THE PLASTIC IS DRY.
THE CLEAR PLASTIC WILL SCRATCH.**

Avoid contact with plastic windows. Keep plastic windows clean by washing them with clear running water and rubbing with your bare hands, only. The use of a rag, sponge or brush will scratch the plastic. Liquid soap may also be used for window cleaning. During freezing weather, an automotive windshield washer solvent may be used.

Use liquid soap and water to clean colored vinyl portions. Scrubbing with a brush or rag is also permitted on the colored vinyl portions.

STORAGE INSTRUCTIONS

Prior to storage clean the windows and colored vinyl parts with a mild automotive detergent, rinse with clean water and allow it to thoroughly dry. Store cab in a clean dry place out of direct sunlight. Avoid folding plastic windows.

INSTALLATION

READ THIS MANUAL COMPLETELY BEFORE BEGINNING INSTALLATION.

The right side of the machine is determined from the operators seated position.

The words "bolt" will refer to a 1/4"x5/8" bolt and "lock nut" will refer to a 1/4" lock nut unless specified otherwise.

Do not tighten bolts during assembly unless instructed to do so.

Park vehicle on level ground and remove start key.

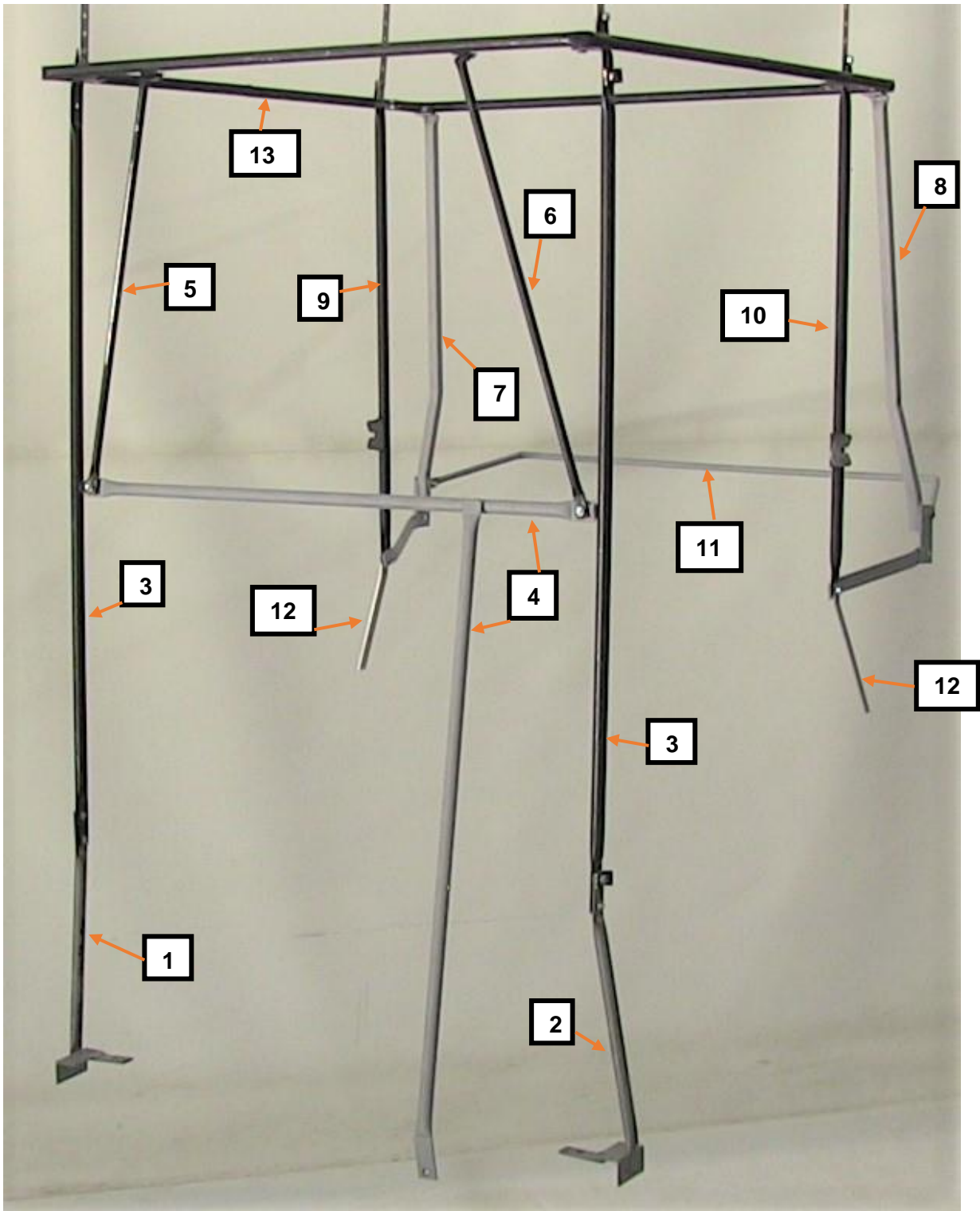
Carton Contents Cab #12244 for Kubota BX23S

| Key # | Part # | Qty. | Description |
|--------------|---------------|-------------|--|
| 1 | 12079 | 1 | Foot, RH |
| 2 | 12080 | 1 | Foot, LH |
| 3 | 10926 | 2 | Front Post |
| 4 | 12249 | 1 | Front Panel Frame |
| 5 | 10002 | 1 | Top Frame Brace, RH |
| 6 | 10003 | 1 | Top Frame Brace, LH |
| 7 | 12245 | 1 | Rear Bracket, RH |
| 8 | 12246 | 1 | Rear Bracket, LH |
| 9 | 40062 | 1 | Rear Post, RH |
| 10 | 40063 | 1 | Rear Post, LH |
| 11 | 12247 | 1 | Rear Curtain Support |
| 12 | 12096 | 2 | Vinyl Stay |
| 13 | 10001 | 1 | Top Frame |
| 14 | 10000 | 1 | ABS Plastic Top, Black |
| 15 | 12088-B | 1 | Door, RH |
| 16 | 12089 | 1 | Door Bottom, RH |
| 17 | 12108-B | 1 | Door, LH |
| 18 | 12248 | 1 | Door Bottom, LH |
| 19 | 12107 | 1 | Rear Curtain |
| 20 | 10749-B | 1 | Windshield |
| 21 | 12094-B | 1 | Front Panel Vinyl |
| | 9820 | 1 | Door Hardware Package |
| | 12109 | 1 | Hardware Package (contents listed below) |
| | 786 | 15 | 1/4"-20 x 5/8" Bolt |
| | 788 | 8 | 1/4"-20 x 3/4" Bolt |
| | 60217 | 23 | 1/4"-20 Nylock Nut |
| | 1514 | 4 | 1/4" Flat Washer |
| | 0787 | 4 | 3/8"-16 x 2 1/2" Bolt |
| | 0790 | 4 | 3/8"-16 Two-Way Locknut |
| | 4902 | 2 | Notched Vinyl Cap For top of Rear Post |

Tools Required:**7/16" Socket and Wrench****9/16" Socket and Wrench****3/32" Allen Wrench****Needle nose pliers for Front Panel Springs under the step plate.**

Step 1; See Figure 1:

Use the parts list and Figure 1 to identify the steel parts.



Step 2; See Figure 2:

Install Right Foot (1), Left Foot (2) and Front Panel Frame (4).

A. Pull the floormats back from the front corners of the step plate. Place the Right Foot on the step plate as shown.

B. Insert a $\frac{1}{4}$ " x $\frac{3}{4}$ " bolt down through the holes. Add a nylock nut, **do not tighten at this time.**

C. Repeat these steps on the left side with the Left Foot.

D. Place the Front Panel Frame over the hood. Use a $\frac{1}{4}$ " x $\frac{5}{8}$ " bolt and a nylock nut to fasten the left side to the hole in Figure 2D. **Tighten enough to hold upright.**



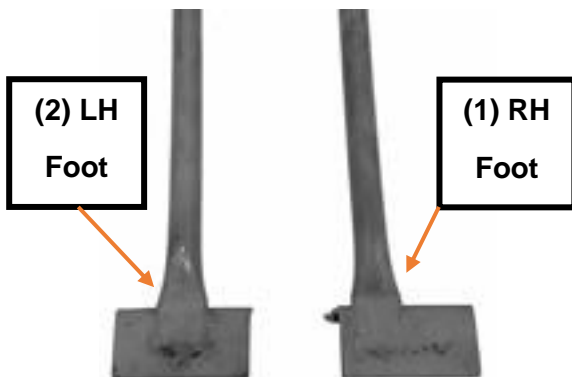
Figure 2



Figure 2A



Figure 2D- Left Side



Step 3; See Figure 3:

Install Front Posts (3) and Right & Left Top Frame Braces (5 & 6)

Note: If you are installing an optional Safety Glass Windshield, omit the Top Frame Braces 5 & 6.

Note: Bent ends of Top Frame Braces will point rearwards and lay flat when properly installed.

- A.** Insert a $\frac{1}{4}$ " x $\frac{5}{8}$ " bolt outward through the lower hole in the foot and the post. Add a nut, **do not tighten at this time.**
- B.** Insert a $\frac{1}{4}$ " x $\frac{3}{4}$ " bolt outward through the upper hole in the foot and the post. Place a hinge from the door hardware package over the bolt and add a nylock nut. **Do not tighten at this time.**
- C.** Insert a $\frac{1}{4}$ " x $\frac{3}{4}$ " bolt forward through the tab on the post, the end of the front panel frame and then the lower end of the top frame brace. Add a nylock nut, **do not tighten at this time.**
- D.** Repeat on left side of tractor.

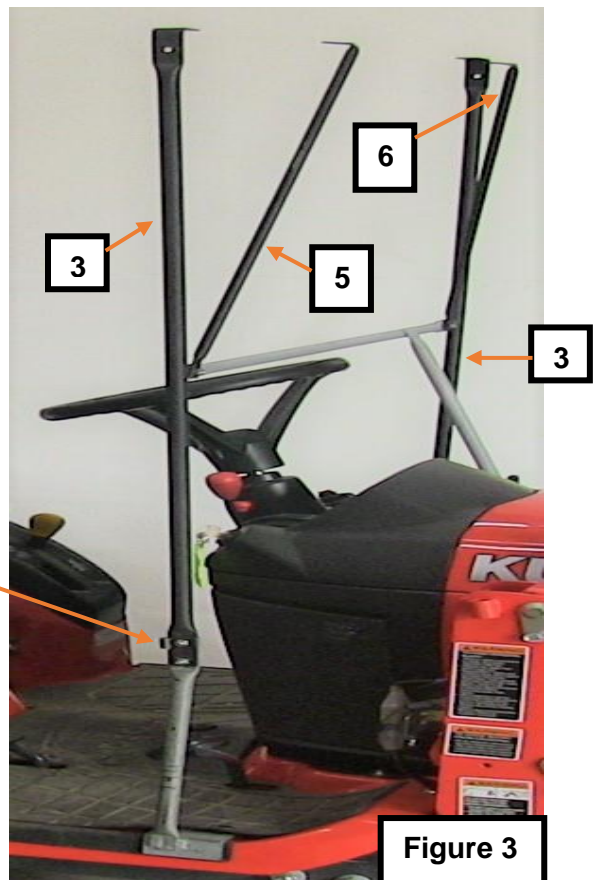


Figure 3

Step 4; See Figure 4:

Install Right and Left Rear Brackets (7 & 8).

A. Place the Right Rear Bracket over the holes at Reference A. Insert two 3/8" x 2 1/4" bolts out through the holes. Add a 3/8" locknut to the bottom bolt only, **do not tighten at this time.**

B. Repeat on the left side.

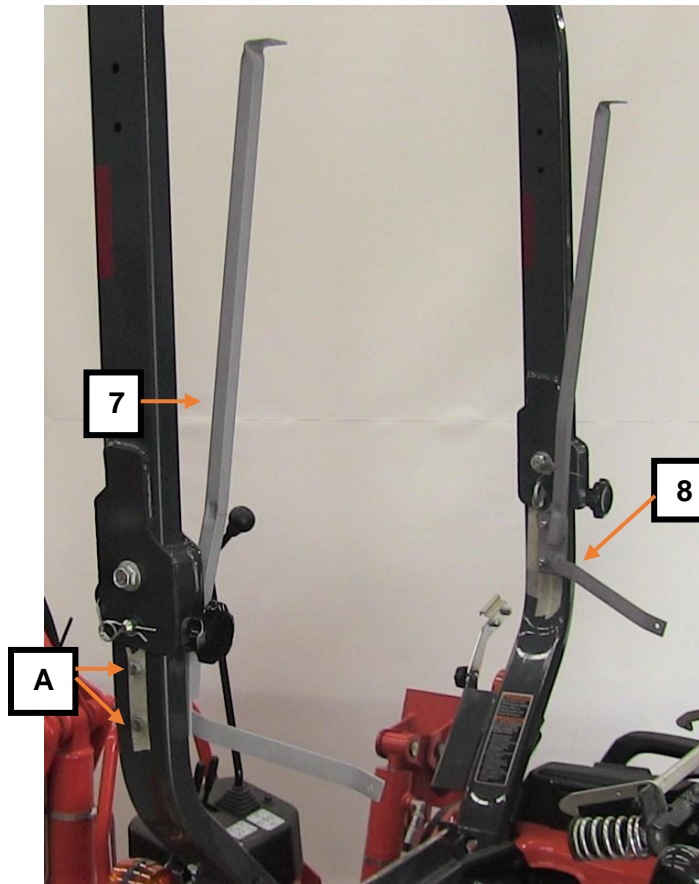


Figure 4

Step 5; See Figure 5:

Install Rear Curtain Support (11)

A. Place the Rear Curtain Support onto the top bolt of the RH Rear Bracket, add a 3/8" locknut. **Do not fully tighten.**

B. Repeat with LH Rear Bracket.

C. Tighten nuts enough to hold support
In position.



Figure 5

Step 6; See Figure 6:

Install Top Frame (13), Rear Posts RH & LH (9 & 10) and Vinyl Stays (12)

A. Place the Top Frame onto the bent ends of the posts.

B. Insert six $\frac{1}{4}$ " x $\frac{5}{8}$ " bolts up through the Rear brackets, Front Posts and Top Frame Braces. Add nuts, **do not tighten at this time.**

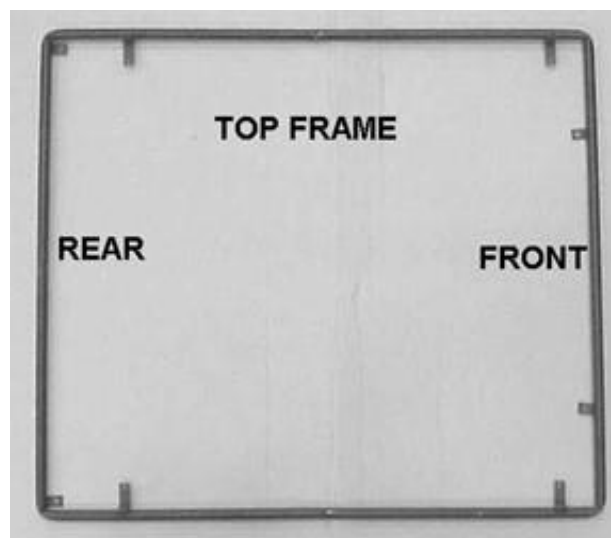
C. Insert a $\frac{1}{4}$ " x $\frac{5}{8}$ " bolt up through the RH Rear Post and the tab in the Top Frame. Add a nut, **do not tighten at this time.** Repeat on the Left Side.

D. Insert a $\frac{1}{4}$ " x $\frac{3}{4}$ " bolt outwards through the RH Rear Bracket, RH Rear Post then the Vinyl Stay. Add a nut, **do not fully tighten.** Repeat on Left Side.



Figure 6

Note: When Rear Posts are properly installed, latch plates will be to the front with the notch to the outside of the enclosure.



Step 7; See Figure 7:

Install the Doors for frame/door alignment.

A. Follow the instructions in the Door Hardware Package to install the Door Bottoms and the Door Latches.

B. Install, close and latch both Doors.

C. Tighten all loose bolts from previous steps at this time.

D. Remove the doors by opening them and lifting them up and out of the bottom hinge then dropping them out of the top hinge.



Figure 7

Step 8; See Figure 8:

Install Rear Curtain (19)

A. Close the Velcro flaps around the top frame at the back and corners.

B. Close the Velcro flaps over the rear posts and around the brackets.

C. Close the Velcro flaps around the Vinyl Stays.

D. Close the Velcro over the Rear Bracket.

E. Place a notched Plastic Protector over the bend ends of each Rear Post. (See inset)



Figure 8

Step 9; See Figure 9 & 9A:

Install Windshield (20) and Front Panel Vinyl (21).

A. Place the Windshield and Front Panel Vinyl face up on a clean flat surface. Press the Velcro strips together.

B. Lay the rod sewn into the top of the Windshield over the top frame. Close the Velcro flaps around the corners of the Top Frame and the Front Posts.

C. Secure the ties to the cross bar and close the Front Panel Velcro flaps around the posts.

D. Hook the springs under the step plates.



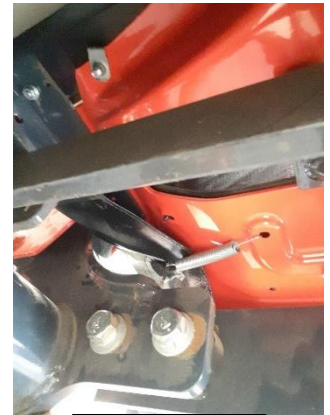
Figure 9



Figure 9A



Spring RH



Spring LH

Step 10; See figure 10:

Install Doors and Top (14).

A. Reinstall doors and connect the Velcro strips on the lower door & front panel.

B. Make sure that the rod sewn into the windshield is lying over the top frame. Place the top over the top frame.

C. Place four 1/4" flat washers over each of the four 1/4" x 5/8" bolts. Insert bolts inwards, add nylock nuts and tighten.

Note: The lower rear edge of the right door can be tucked in between the right handle and the console to close the gap in that area.



14

Figure 10

Optional Cab Accessories:

#10120 Safety Glass Windshield

#10122 Electric Wiper

#12188 Low Profile LED Strobe Light

#11133 Rear View Mirror, R or L Mount

#12142 Front LED Work Light Kit

#12143 Rear LED Light Kit





For Replacement Parts and Accessories Contact:

Original Tractor Cab Co., Inc.

P.O. Box 97 6849 W. Front St.

Arlington, IN 46104

Phone 765-663-2214

Fax 765-663-2101

Email Sales@originalcab.com

Visit us on the web to see our other products.

www.originalcab.com

Cabs for Lawn Tractors, Garden Tractors, Compact Tractors, Snow Blowers, Utility Vehicles

Sunshades for Tractors, Mowers, & Utility Vehicles